

# Using a control with CX-Supervisor under Windows2000

## Introduction

This note details how to use an ActiveX control with CX-Supervisor under Win2000, in the case that the “Insert Object” dialog cannot initially “see” the control.

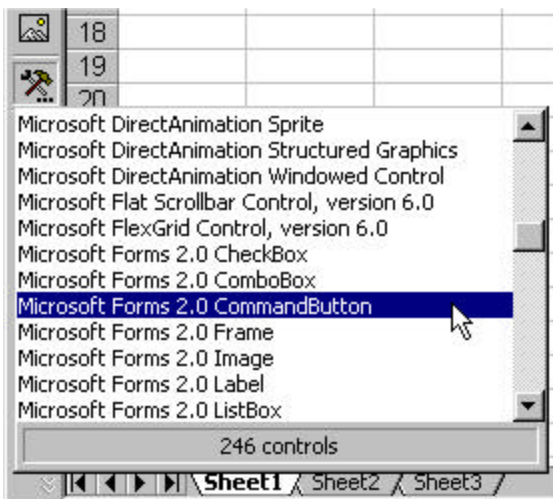
## Problem

The “Insert Object” dialog is a standard part of Windows and is not controlled by CX-Supervisor or any other OMRON product. Under Windows 2000 it exhibits the problem that it will not show all the ActiveX controls which are registered on a PC. A symptom of this is that you can insert a particular control into an Excel spreadsheet or a Visual Basic application, but you cannot select it to insert it into a CX-Supervisor page.

## Solution

For each control which is required for use by CX-Supervisor, perform the following operations:

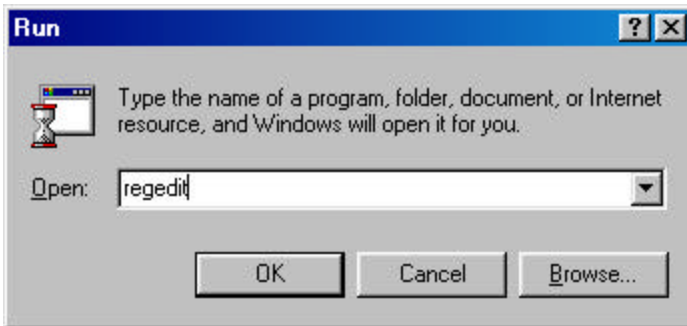
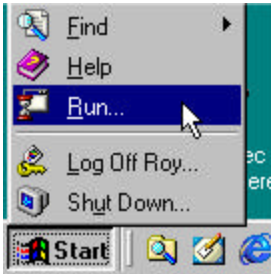
1. Identify the name of the control. This can be found by looking at the name of the control, as shown to Excel or some other program:



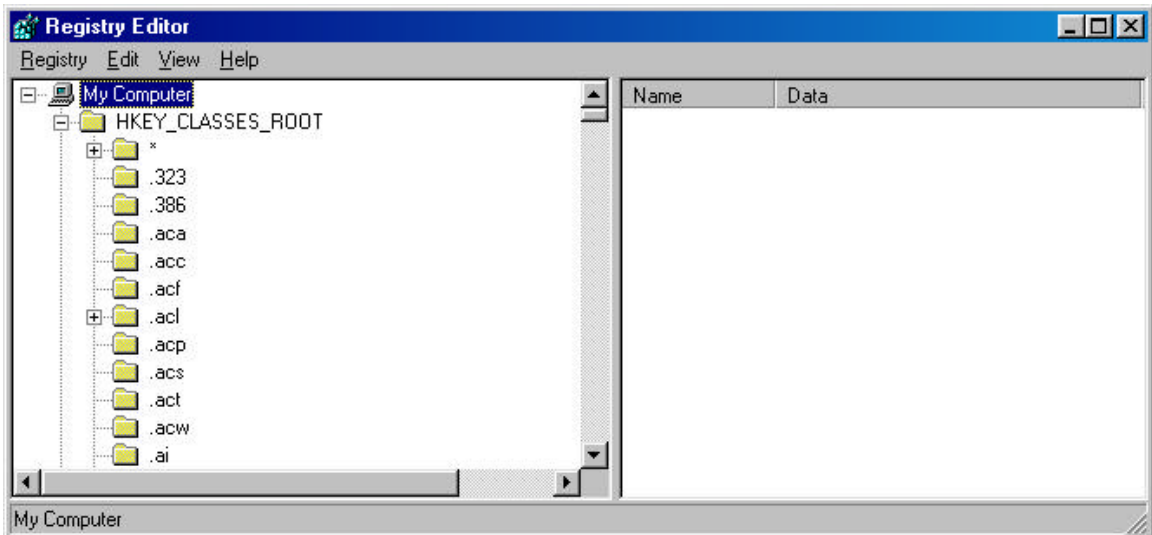
2. Make a note of the name as shown here, for example

“Microsoft Forms 2.0 commandbutton”

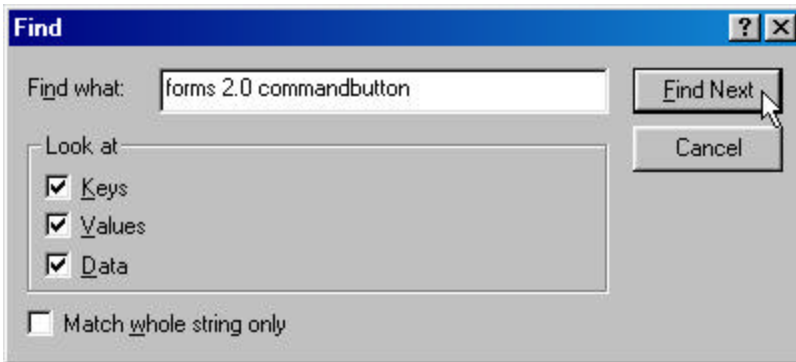
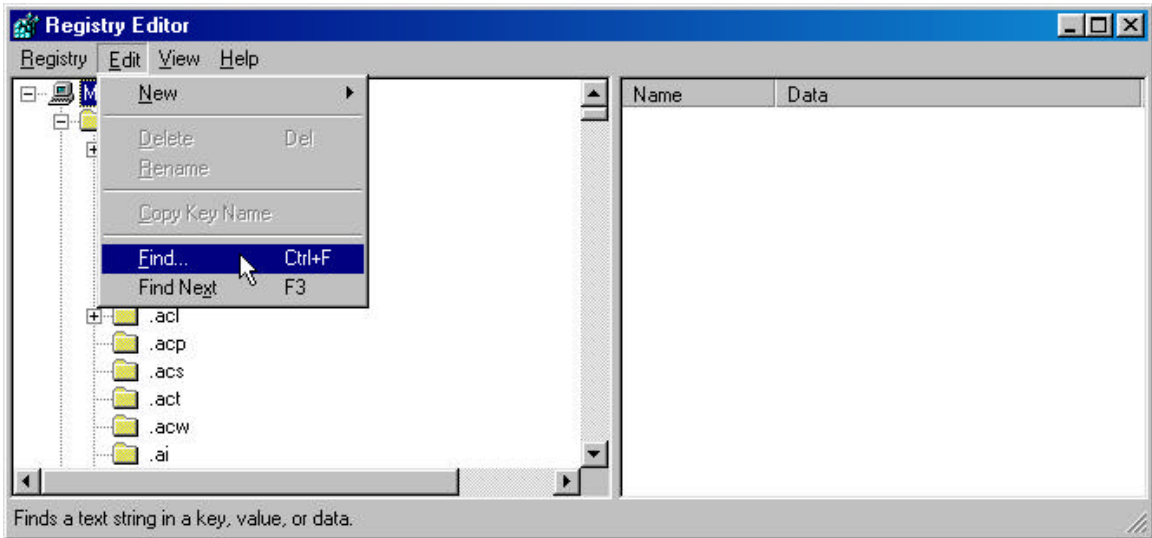
3. Now run the Windows Registry editor, regedit:



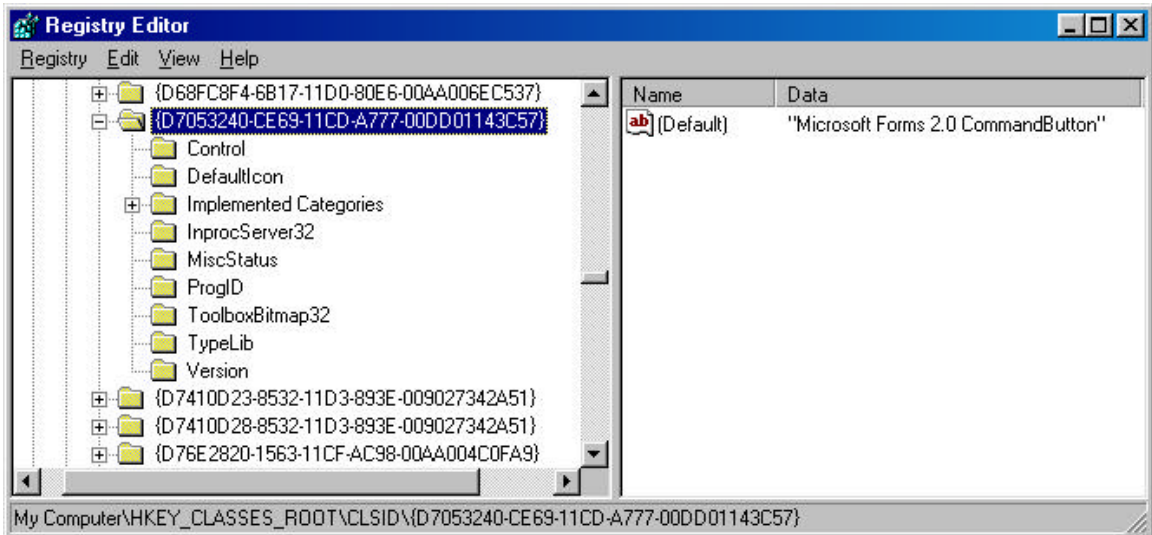
Click "OK" to run the Registry editor



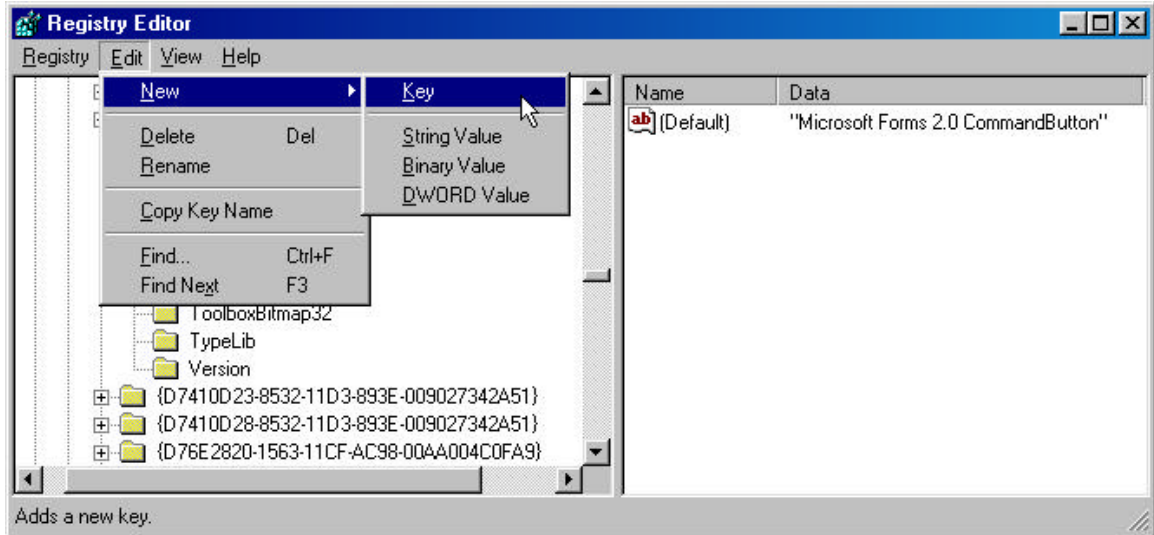
4. Now find the branch which defines the control you are looking for:



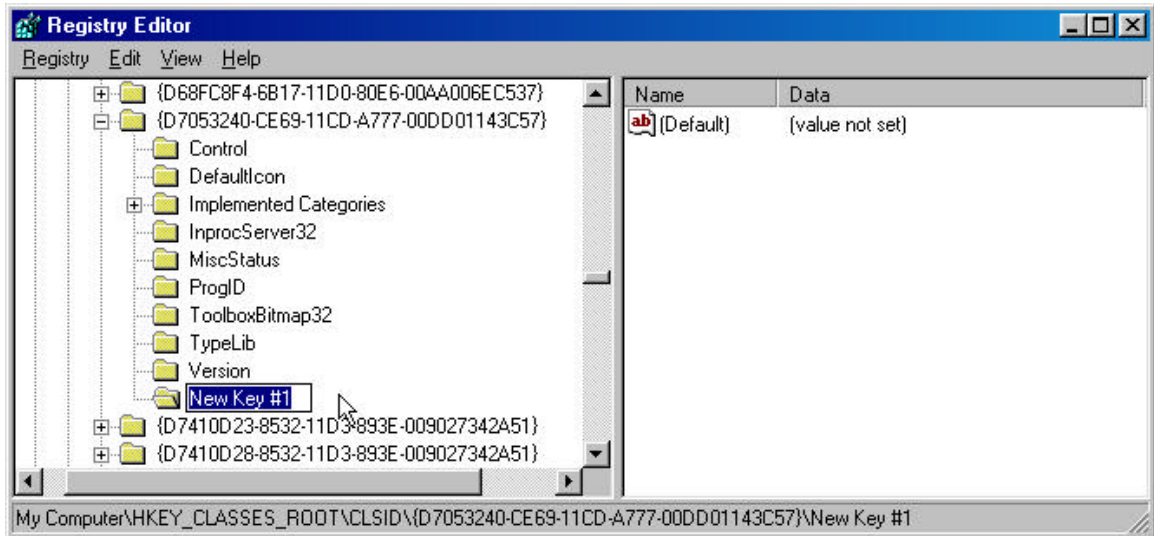
This will show the branch something like this:

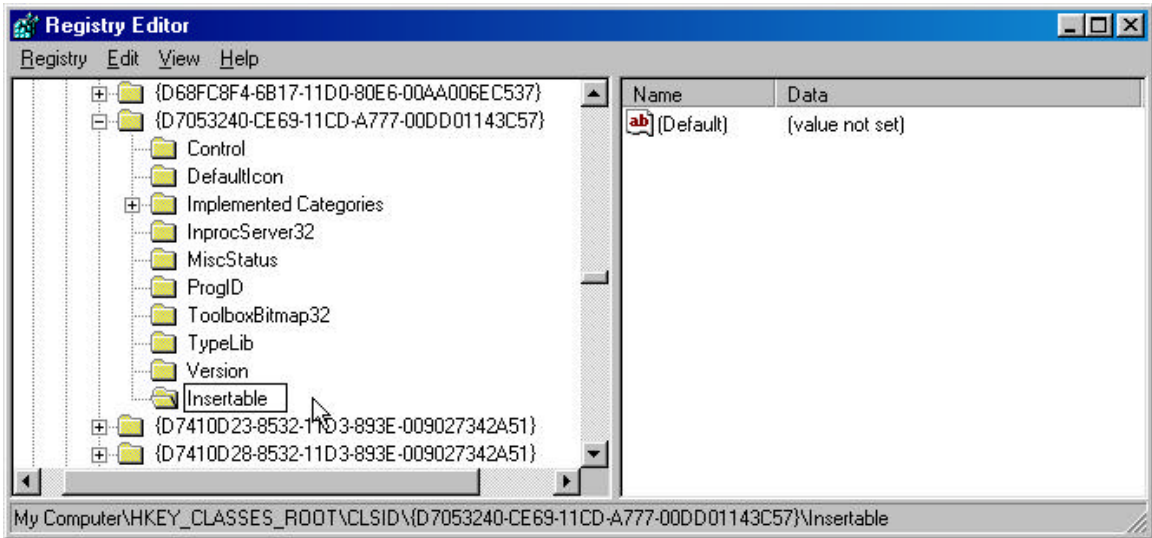


5. Now add a new key with the name “Insertable”

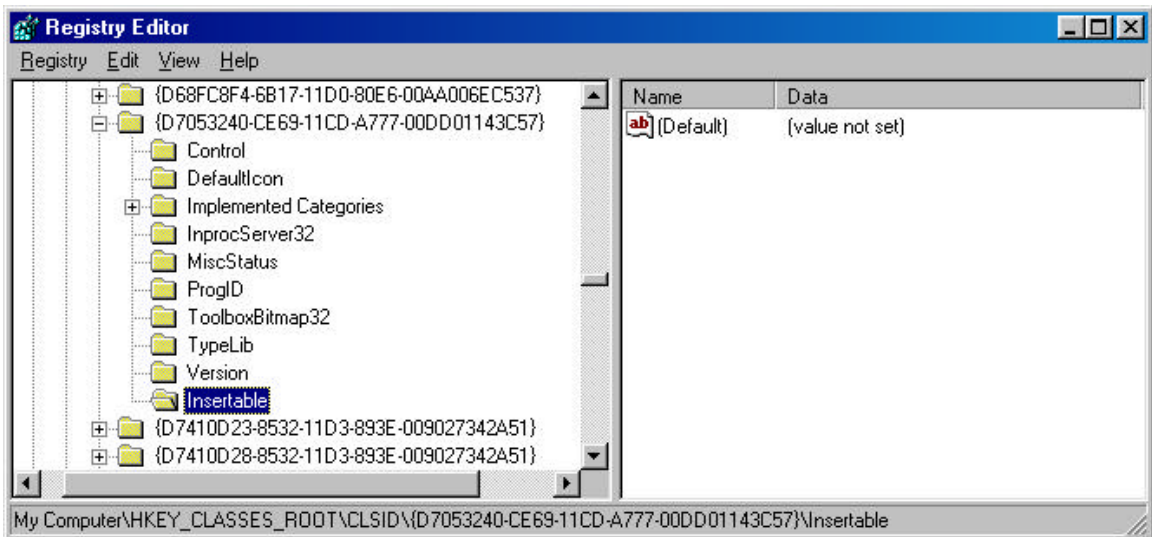


The new key is added and you need to edit the name of it “in place” in the tree:





6. Finally, you will have a branch which now looks something like this:



7. The control can now be used in CX-Supervisor