

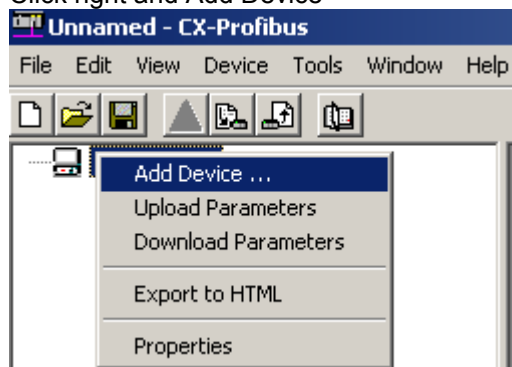


PROFIBUS COMMUNICATION BETWEEN CJ1-PRM21 AND TJ1-PRT

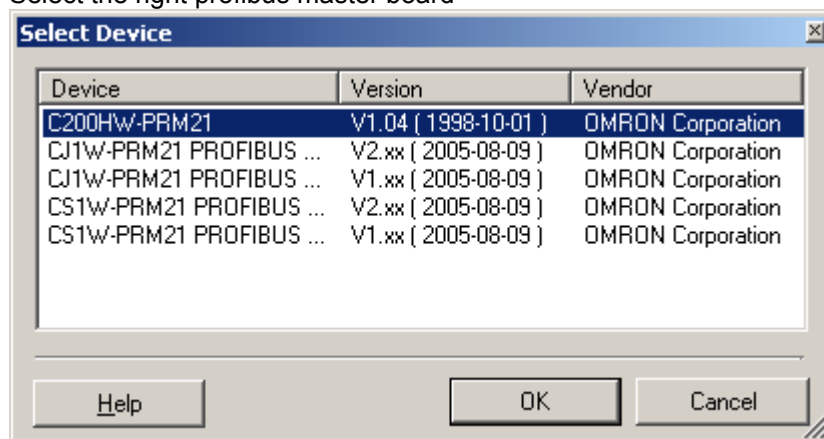
CONFIGURING THE CJ1-PRM21 WITH THE CX-Profibus

Start the CX-Profibus software tool.

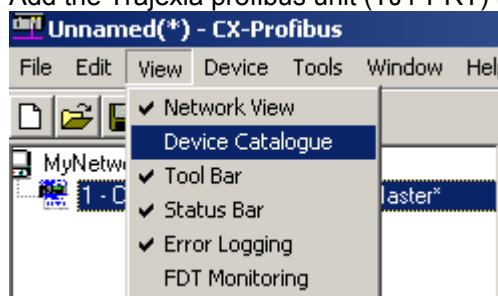
Click right and Add Device



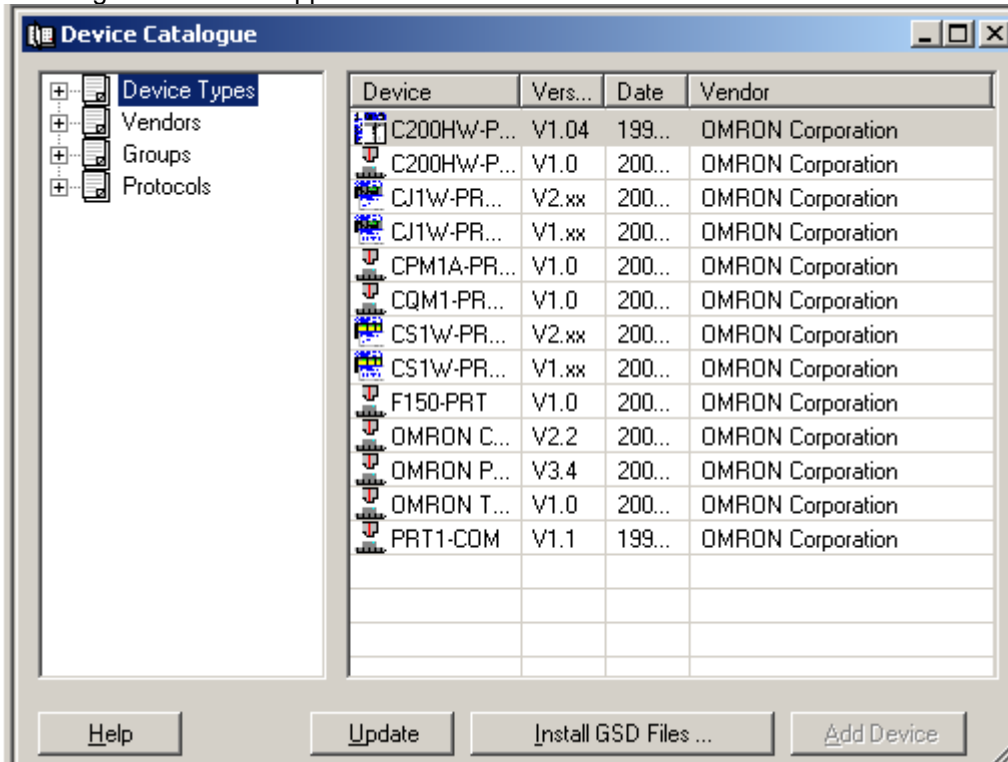
Select the right profibus master board



Add the TrajeXia profibus unit (TJ1-PRT) to the Device catalogue.

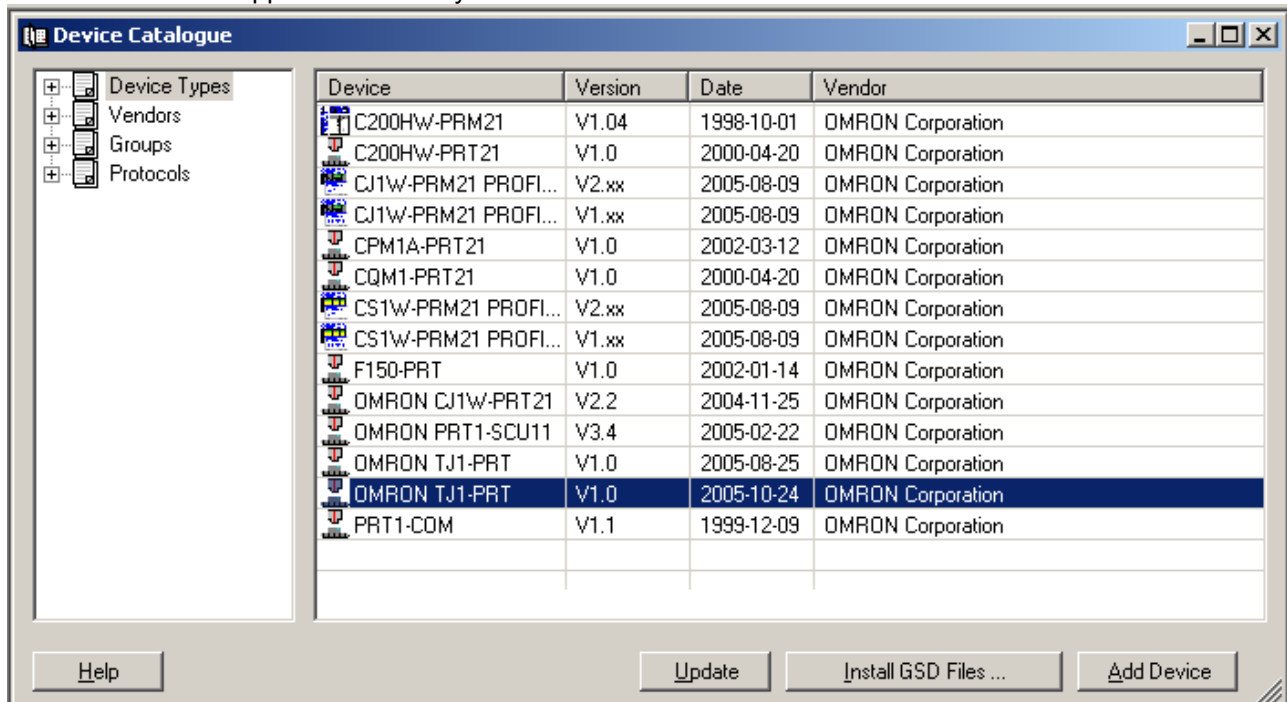


Installing the GSD file supplied with the units.

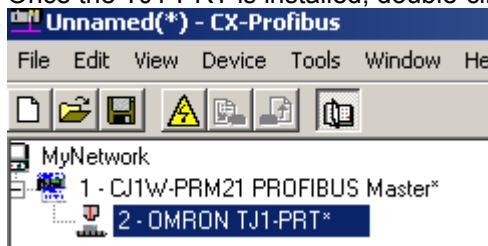


After this Update the device list.

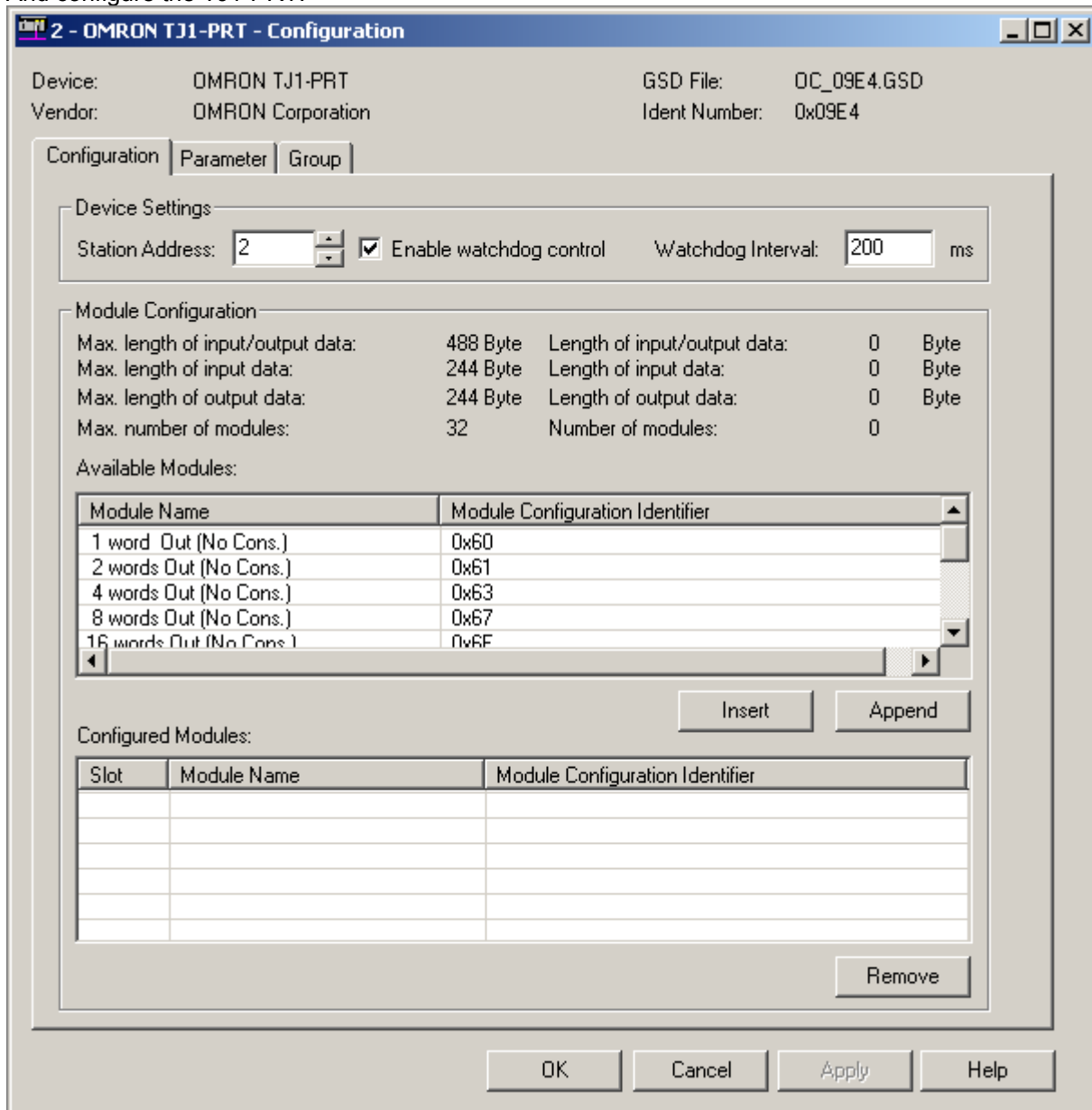
Once the TJ1-PRT appears in the list you can add this device to the master.



Once the TJ1-PRT is installed, double-click on it.



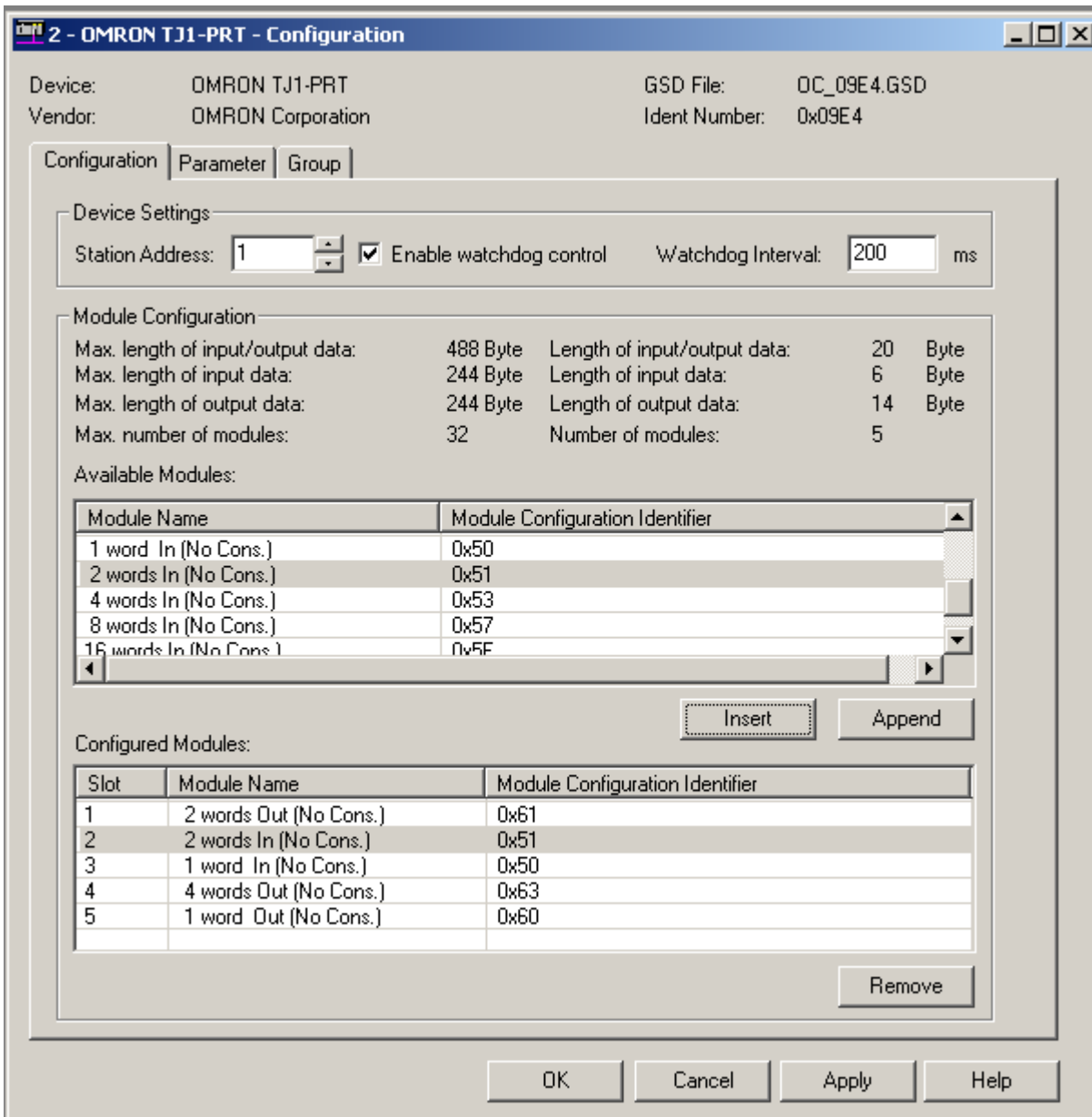
And configure the TJ1-PRT.



We have to configure:

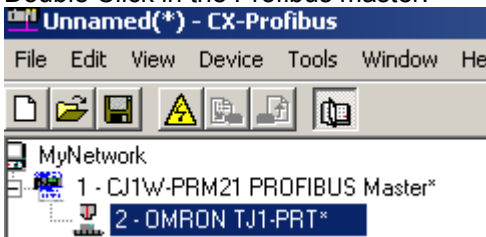
- Station address.
- Input words
- Output words

We have modules of 1, 2, 4, 8 and 16 Inputs and Outputs that you can freely select to adapt to your application.



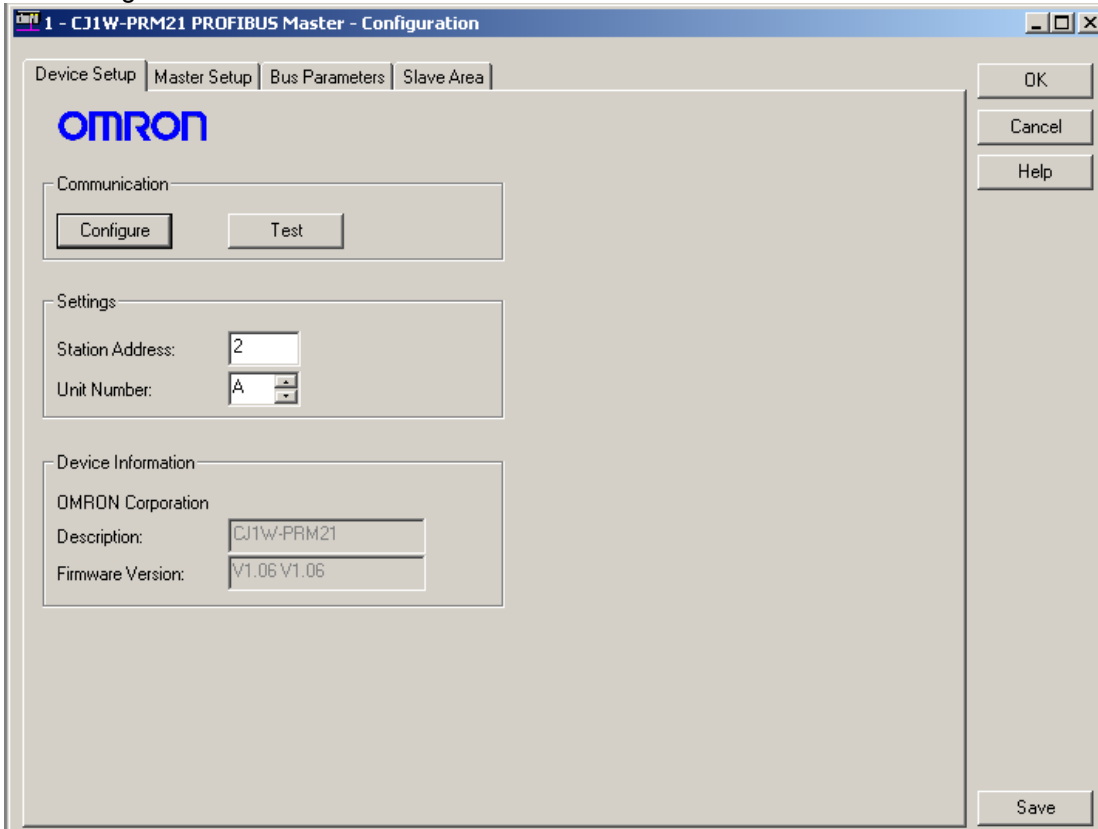
And click OK

Double Click in the Profibus master:



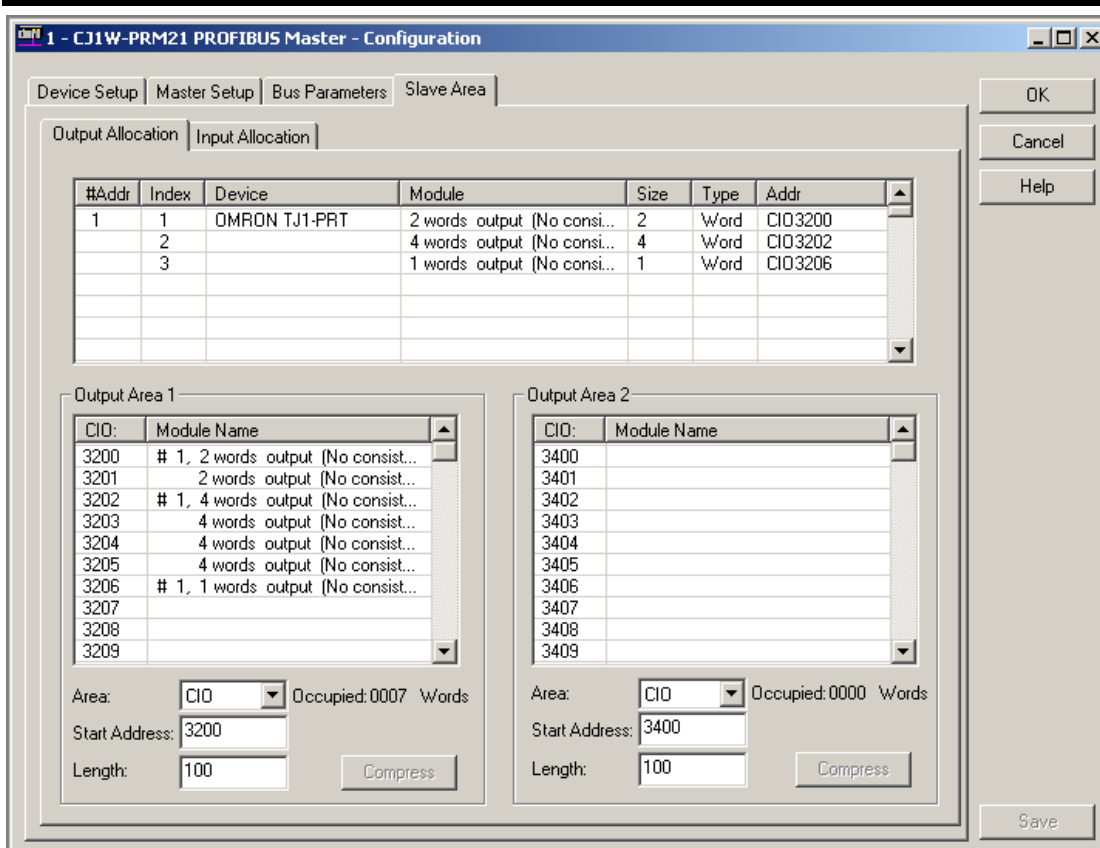
And the configuration Window appear

And Configure the Station address and Unit Number

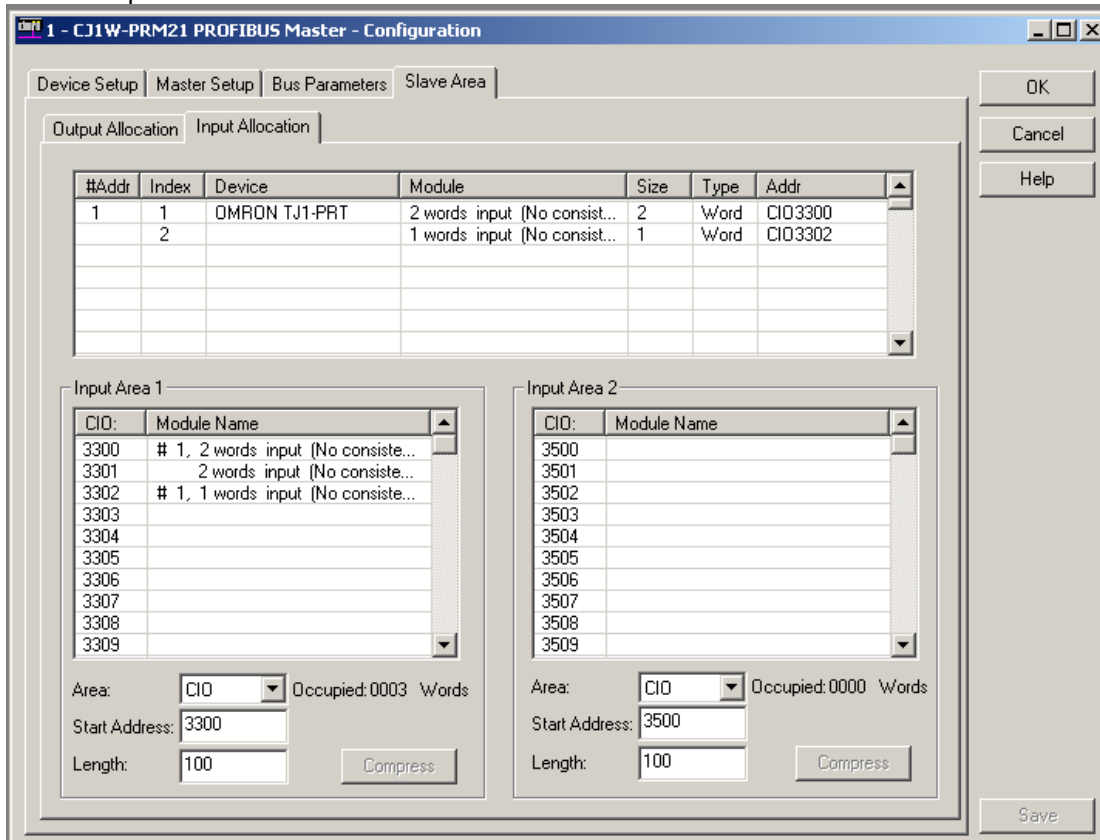


And in the Slave Area...

Select the PLC area for the Output words

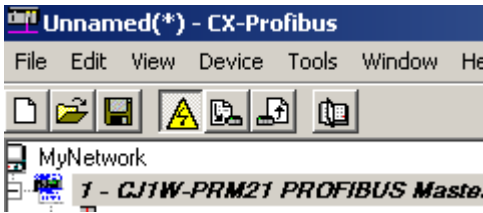


And the Input words.



Finally,

- Save the program
- Go on line

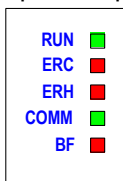


- And download the program.

CONFIGURING THE TJ1-PRM

First, set the node number in the TJ1-PRT with the two rotary switches in the front.

At power up, the LED's light as follows.



RUN LED LITS
ERH LED BLINKS

Execute the next commands from a Basic Program:

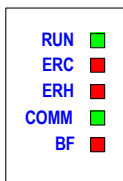
PROFIBUS (2,3,4)

'Initialise TJ1-PRT located in slot 2

PROFIBUS(2,2,1,10,7,150,3)

'7 output words are transmitted from the master to VR(10) to VR(16) and
'3 input words are sent from VR(150) to VR(152) to the master

Now, if everything went correctly the LED lit as:



RUN LED LITS
COMM LED LITS

And the communication is already established.