

# Connecting a PLC to a PC for programming using CX One

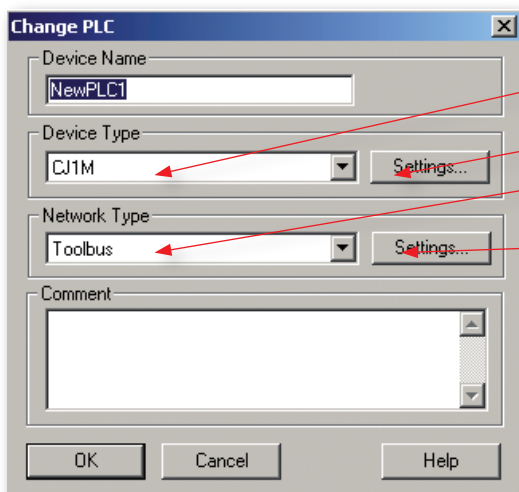


### PLC BEFORE POWERING PLC

- 1A Initially, make sure all modules are clipped together securely
- 1B Dip switches on PLC, should **ALL** be **OFF POSITION**, excluding CPM1/CPM2A then put power to PLC. Make sure connected to **PERIPHERAL PORT**

### PC STARTING A PROJECT NEW/OLD ON PC.

- 2A Open from CX ONE, CX programmer (CXP)
- 2B From **FILE** menu at top of CX Programmer, start new, this will get change dialogue box,



- 2C Select from **DEVICE TYPE BOX**, which PLC you are using.
- 2D Next to right of Device type box, **SETTINGS** button, select specific model of PLC, then press OK
- 2E In **NETWORK** Type, select Toolbus for CJ1M/CS1, Sysmac Way for all other Omron PLC's.
- 2F To the right of Network type, select **SETTINGS**, then select **DRIVER** tab at top. Select **PORT** name. Use Com 1,2,3 .., which is being used to communicate between PC and PLC. **BAUD RATE** should be ticked for Auto detect. Then press **OK**
- 2G Press **OK** and the dialog box will disappear, leaving you with an empty program space.

### 3 CONNECTING ONLINE

- 3A Connect COM's cable to PC, other end to PLC
- 3B Click on **PLC** on top of CX Programmer menu, and from drop down menu select **WORK ONLINE**.
- 3C The program space should now have turned grey, indicating the PC is online with the PLC.
- 3D On front of PLC, PRPHL or COMM will be lit, depending on which port on the PLC is connected to.