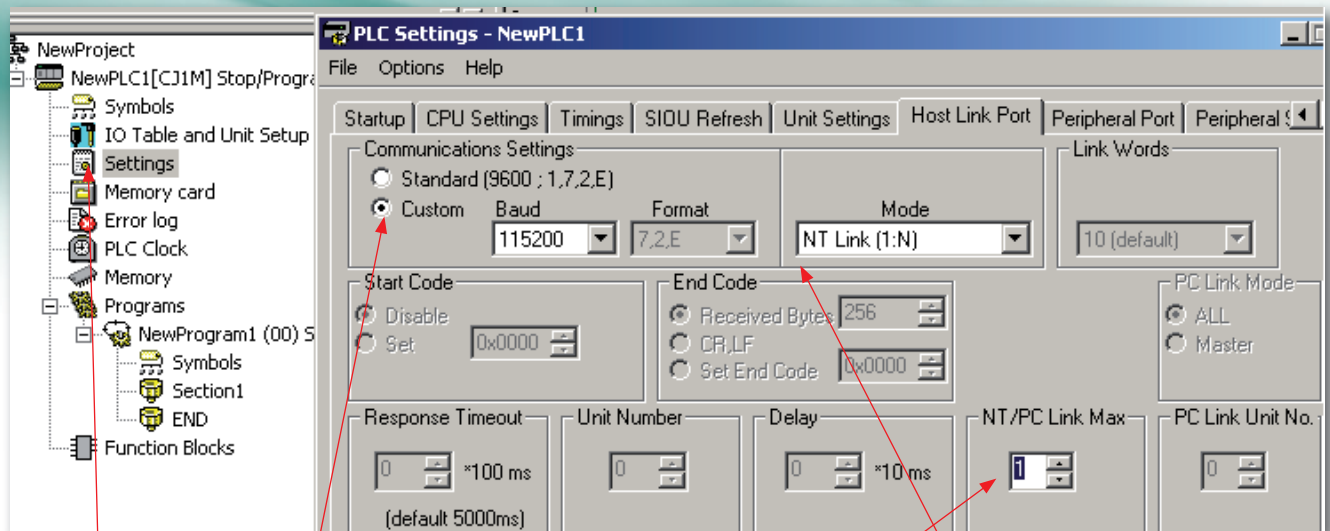
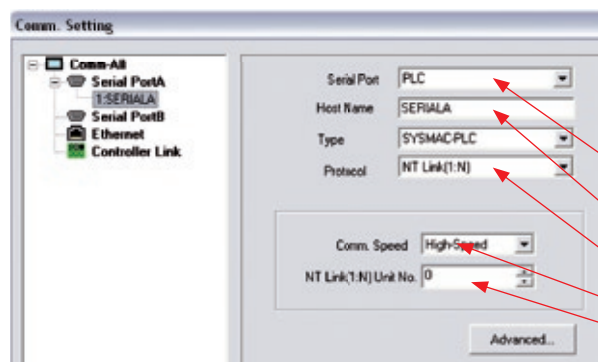


Setting communications between a CJ1 PLC and an NS screen



- 1 Connect the communication cable between your computer and the **CJ1 PLC**.
(Check that dipswitch 5 is in off position).
- 1A go online with the **CJ1 PLC** by using **CX-Programmer** and set the PLC in program mode (**Ctrl+1**).
- 1B Double click on **settings** in **workspace** on left hand side of CX-programmer.
If **workspace** isn't shown, use **Alt+1** so **workspace** will appear.
- 1C Choose in the pop-up screen folder **HOST LINK PORT** to change the communication settings.
- 1D Select **CUSTOM** and change the **BAUD** to **115.200** (high speed), use for **MODE** the **NT LINK(1:N)**.
- 1E Set the **NT/PC LINK MAX** to value **1**, this is the number of nodes on NT/PC LINK network. Close pop-up screen and settings will save automatically.
- 1F Transfer the settings to the **PLC** by clicking the **PLC** tab in the top menu bar, choose **TRANSFER -> TO PLC**. (or use **Ctrl+T**), press **enter** to agree on transferring the settings
- 1G After transfer make sure that the **CJ1 PLC** is back in **RUN MODE** (**Ctrl+4**)



- 2 Connect the communication cable between your computer and the **NS Terminal**.
- 2A Open an **existing project** or create a **new project** in **CX-Designer**.
- 2B Click on the **PT** tab in the top menu bar and chooses **commu-nication settings**
- 2C Expand **Comm-ALL** tab to reveal the various communication options.
- 2D Expand **Serial PortA** to reveal the serial port to PLC
- 2E Select **SERIAL Port to PLC**, **HOSTNAME** to **SERIALA**, **TYPE** to **SYSMAC-PLC** and **Protocol** to **NT LINK(1:N)**.
- 2F Set **COMM.** To **High-Speed** (baud rate 115200), **NT Link(1:N)** set to **0** (for only node on network NT Link (1:N)). Save the settings by pressing the **OK** button.
- 2G Transfer the settings to the **NS Terminal** by clicking the **PT** tab in the top menu bar, choose **TRANSFER -> Transfer [to PT]** (or use **Ctrl+B**), and press **YES** to agree on transferring the settings.